



German Tolkien Society supports Save the Shire Campaign

Tolkien fans in Germany are speaking out against plans by RWE, the German-based energy giant, that could wreck the home of the Hobbits. The German Tolkien Society is backing the Save the Shire campaign and are urging their members to take action.

“We believe we can make a difference by bringing attention to what's happening and encouraging you to take action and support the cause,” said Annika Röttinger, co-host, on the August episode of TolkcCast, the society’s podcast.

“The view from the real Bag End that inspired the Shire is now threatened. ... RWE is destroying the last remaining literary landscape of Tolkien.”

The podcast team discussed the fact that over 1300 people have already contacted RWE, to ask them to withdraw their plans to build a 287-acre solar power plant and highlighted the fact that thousands of local residents in Worcestershire have formally objected to the development.

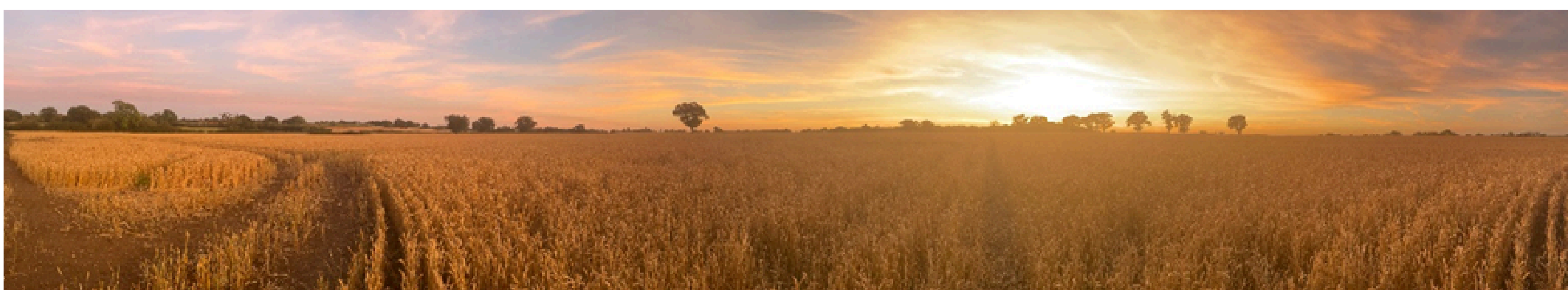
They urged their members across Germany to spread awareness of RWE’s attempts to destroy Tolkien’s last remaining landscape by sharing links, writing blogs and mentioning the Save the Shire campaign in their newsletters.

They were also supportive of the Roofs First campaign, saying roof top solar is much more common in Germany and is a more effective and reliable source of renewable energy because local people can use it directly themselves.

“We are delighted that The German Tolkien Society is supporting our campaign,” said Phil Coathup, chairman of the Roundhill Wood Opposition Group. “As more and more Germans get involved, perhaps RWE executives will finally take notice and withdraw their application.”



Cover photo of TolkcCast



View across 'The Shire', September 2024



Hundreds of our supporters have called on the Government to protect the British countryside

Over 600 Save the Shire and Roofs First supporters have sent in detailed responses to the Government's consultation on the National Planning Policy Framework (NPPF) which is considered in the majority of English planning applications from renewables to housing.

Billed as one of the most radical shake-ups of recent times, changes to the planning policy could significantly impact the likelihood of approval for developments like the industrial solar scheme and Battery Energy Storage System proposed by RWE at Roundhill Wood.

Through the Save the Shire and Roofs First campaign, supporters called on Angela Rayner, the deputy prime minister and other decision makers, to include greater protections for our literary landscapes and prioritise putting solar panels on rooftops across the country before using our green spaces and fertile agricultural land.

"Britain has one of the lowest total amounts of green space in Europe. We should not deplete these further. Green spaces benefit health and wellbeing while supporting wildlife," said one supporter.

Others compared the UK to other countries: "Schemes in the Netherlands, Germany, Switzerland and South Korea, to name but a few, use south facing motorway banks and other urban areas for mass solar panel installations. This not only protects agricultural land and the national security of food production, but also ensures power is generated near where it's needed."

The consultation is now closed. Thank you to all our supporters for sending a resounding message to the government to protect and preserve our countryside and our literary heritage for future generations.



Solar Panels on Highways, Germany



Solar panels on roofs in the German town of Amorbach (2006)

Podcasts about 'The Shire'



Tolkcast

"The view from the real Bag End that inspired 'The Shire' is now threatened."

[Listen to the podcast here](#)

Cafe Rainy Days

"Solar should be on Roofops,"
Carly Tinkler, Landscape Architect.

[Listen to the podcast here](#)

