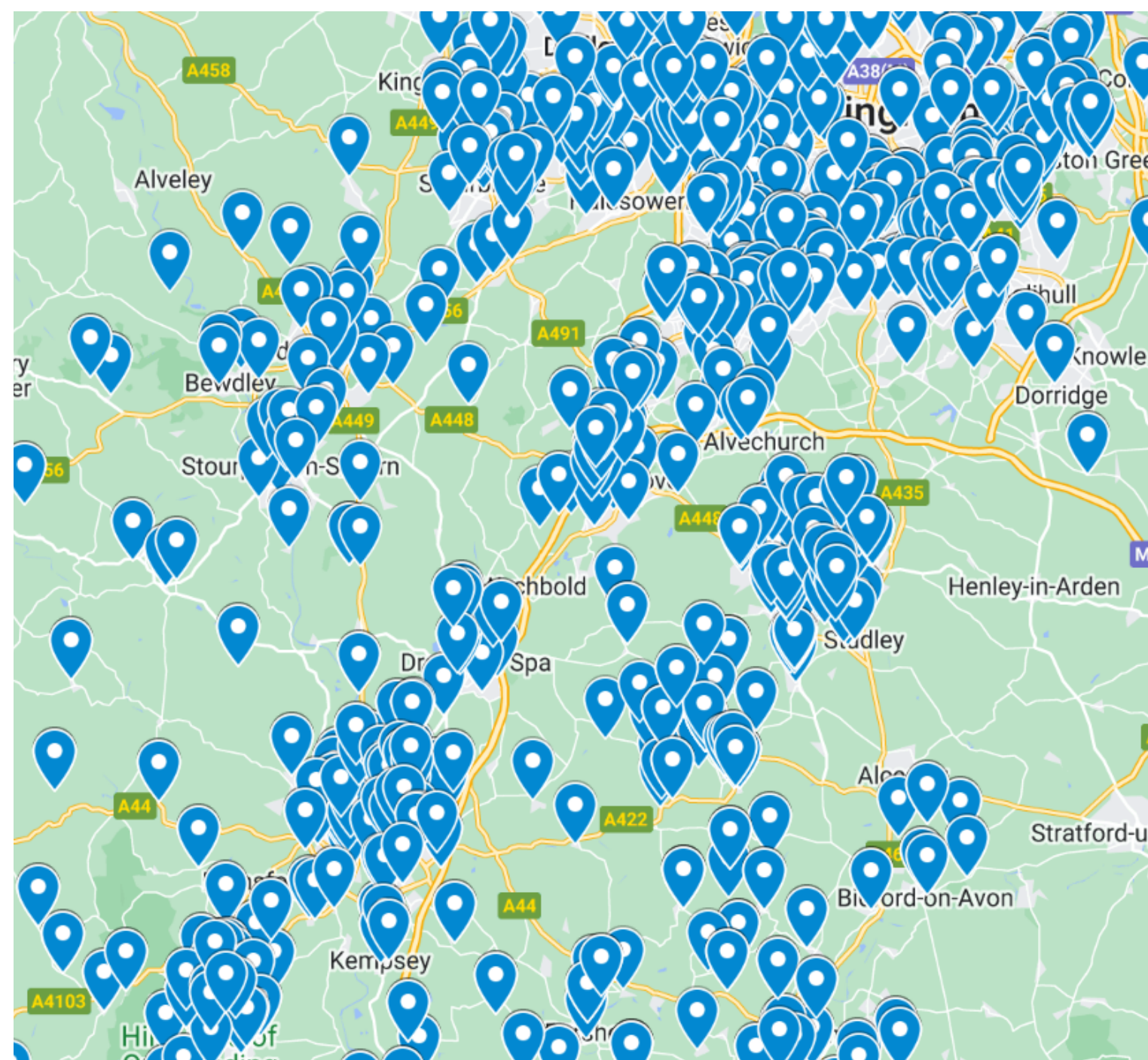




Thousands say NO to huge power station



Local people supporting our campaign

Click the pins on the map to see comments from people in your area.

Hundreds more local people are supporting our campaign against the building of a huge solar power station on our beautiful Worcestershire countryside. Our volunteers have put up posters and banners in all the villages across our community.

Thank you to those of you who have already submitted an objection to the council. It's not too late if you haven't so please tell friends, family, and neighbours before the landscape that inspired Tolkien's 'The Shire' is lost forever.

**You can
object here**

Instead of using 250 acres of valuable farmland, why not put solar panels on every house in the area and surrounding villages, and the land can be used for its proper purpose!
Penelope - Inkberrow

The effect on the biodiversity of the area must be considered ... Please look for alternative urban solutions - storage unit roofs, new build houses and factories, other work units. Please, PLEASE, don't build on this beautiful, historical greenbelt.
Georgina - Worcester

I believe we need to protect our beautiful countryside, otherwise we will lose what makes this place beautiful
Holly - Worcester

Rural England needs protecting. Tolkien's books have affected millions of people's lives, generations even. I grew up with these books, and I was so proud to know I lived near to the Shire.
Hannah - Evesham





Solar power station could increase risk of flooding



Gate into the Shire flooded



View of Earls Common Road



Aerial view of the flooded Shire

The recent bad weather flooded much of the huge solar power station's proposed site. The photos above show the impact of Storm Henk earlier this month.

Campaigners are now asking for more details about drainage of the site as without incorporating basic drainage the development may lead to increases in flood risk elsewhere.

The Shire and the wider area floods regularly and has done so even more in recent years.

“Solar farms can create increased concentration of surface water and intensify erosion in between the rows of solar panels which can lead to an increased surface water peak runoff rate and runoff volume,” said Phil Coathup from RWSF.

The use of heavy machinery and vehicles on site, will also damage the existing natural protection of trees and grass, leading to increased risk of flooding for local people.

“The risk of flooding in Inkberrow and other villages near to the site is yet another reason why we need to stop this huge industrial development” Phil added.



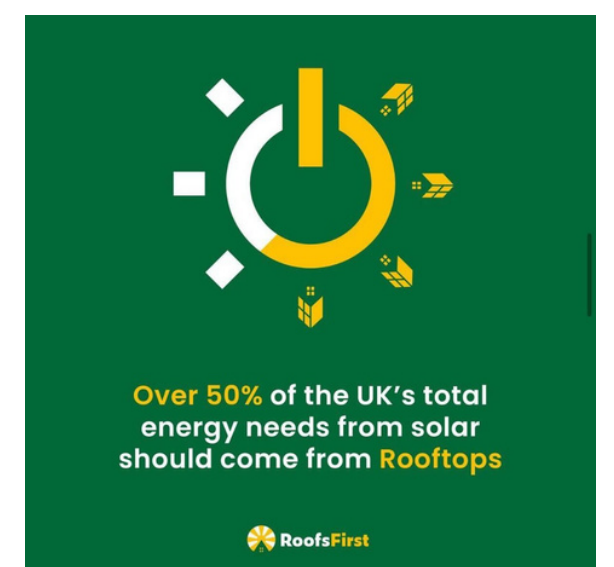
Public support for RoofsFirst

New research shows that the majority of people, believe that the government should promote a 'Roofs First' policy when it comes to solar energy.

RWSF is supporting the 'Roofs First' campaign, which has enabled thousands of people across the country to write to Government and their local MP, demanding that rooftop solar is prioritised above building solar panels on agricultural and green belt land because once our green space is gone, it's gone for good.

Did you know that over half of the UK's solar energy needs could be met by putting solar panels on the south-facing roofs of car parks, warehouses, public buildings, and our homes? To find out more and take action to help save the British countryside, please go to the campaign website:

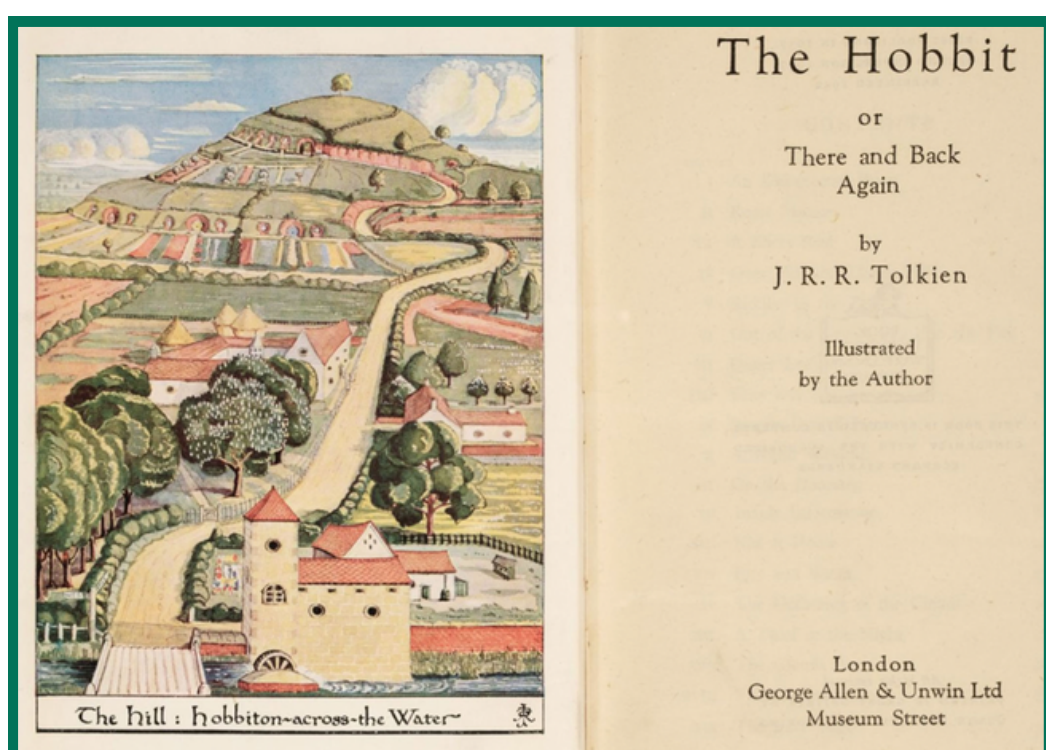
<https://savetheshire.co.uk/roofs-first/>



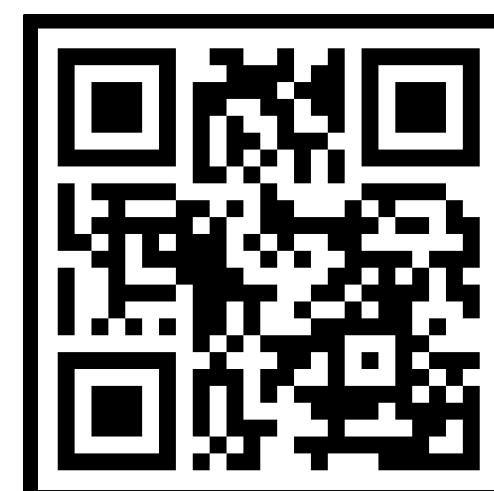
The latest research, of 3000 people, conducted by the CPRE, The Countryside Charity, reveals that 95% believe that a rooftop solar approach to solar energy is needed to protect our countryside. There is also overwhelming support, 97%, for making rooftop solar panels standard requirement for all new buildings and car parks before receiving planning permission.

Local event planned with Tolkien author

To celebrate the Tolkien connection in the area, we're organising an event with a local author which will take place at one of our village halls. More information to follow in next month's newsletter including how you can get tickets so watch this space!



To keep up to date with our events, sign up to our campaign below:



Tolkien's painting of the view from Bag End Farm of 'The Shire' in the first edition of The Hobbit (1937)



With your support we can do it!

We need to continue spreading the message about German-owned JBM's plans to build an industrial solar power station on our beautiful Worcestershire countryside.

To do this, we need funds to not only pay for posters and banners but also for expert opinion to get our arguments across - otherwise this landscape which inspired Tolkien's 'The Shire', could be lost forever.

The people-powered campaign has included mobilising support amongst local residents and the wider community.

If we are to continue to highlight the damage this development will cause, it's vital we raise much needed funds to stop the destruction of our countryside.

You can safely and securely donate to our campaign by sending a direct bank transfer to:

RWSFOG LIMITED

Account No	Sort Code
73129585	51-61-26

Auction of promises

We're also organising an auction of promises for April so please get in touch if you would like to get involved and contribute a promise.

